

“Underwater Search Equipment it *Pays* to own”

Jack Fisher, President
-JW Fishers Mfg Inc



Remote Operated Vehicles

Underwater Video Systems

Cable and Pipe Trackers

Side Scan and Scanning Sonars

Pingers and Receiver

Diver Held Metal Detectors

Boat Deployed Metal Detectors

Search Accessories

For more than forty years JW Fishers has specialized in the design and manufacture of reasonably priced, high tech underwater search equipment which is in use worldwide.

JW FISHERS MFG INC

1953 County Street
E. Taunton, MA 02718 USA

(508) 822-7330; FAX: (508) 880-8949

jwfishers@aol.com www.jwfishers.com





Jack Fisher

“A complete line of video systems ROVs,

Go to web site for comprehensive data sheets on all products.

SeaLion-2 ROV

The SeaLion 2 is the next generation of Fishers very popular SeaLion ROV. It is ideally suited to a variety of applications including pipeline inspections, river and ocean searches, dam surveys, oil and gas platform work, fish farming, and homeland security operations.

The SeaLion 2 is equipped with four high performance motors that make it more powerful than the SeaOtter-2. In addition, even more thrust is available with a Power Boost



“The SeaLion is paying for itself very quickly (dam inspections)” ... M. Ostroski, Toronto Canada

feature that provides the ROV with an extra burst of speed when heavier currents are encountered. Other advantages are 1,000 foot depth rated housing and the ability to operate with cable lengths up to 1,500 feet.

The SeaLion 2 has front and rear facing color cameras with pan and tilt. Illumination for the front camera is provided by two powerful 100 watt tungsten halogen bulbs. A ring of high intensity LEDs provide lighting for the rear camera. System controls are cleanly laid out in a high impact, waterproof case with built in 15 inch ultra bright LCD monitor. A PS 2 controller attaches to the console to control lights, cameras, and thruster power.

Options: side cameras, computer control interface, a manipulator arm, scanning sonar, built in DVR, and metal detector. When equipped with the metal detector the ROV becomes a high tech search system capable of locating weapons, unexploded ordnance, pipelines, buried treasure, and other metal objects.

Our Most Powerful ROV



15" Monitor

“...performed flawlessly. I've operated many ROVs, I am very impressed with the SeaLion's power and maneuverability.”

...Jack Mead, UK

SeaOtter-2 ROV

The SeaOtter-2 is the next generation of Fishers popular SeaOtter ROV. This ROV is best for working in areas with low to medium currents. It is well suited to a variety of applications including pipeline inspections, river and lake searches, dam surveys, oil and gas platform work, fish farming, and homeland security operations.

The SeaOtter-2 can dramatically reduce search time, and the risk and high cost associated with diving operations.



“Despite the current and poor visibility around the structure, the SeaOtter performed very well.”... Dave Reser, FL

This ROV has front and rear facing color cameras, each with pan and tilt. Illumination for the forward looking camera is provided by two very bright 50 watt tungsten halogen bulbs. Lighting for rear camera is provided by a ring of high intensity LEDs.

Controls for the system are cleanly laid out in a high impact, waterproof case with built in 10.4" LCD monitor. A PS 2 controller attaches to the console to control lights, cameras, and thruster power.

Options: manipulator arm, scanning sonar, and remote metal detector. When equipped with the metal detector the ROV becomes a high tech search system capable of locating weapons, unexploded ordnance, pipelines, buried treasure, and other metallic objects.

Our Most Popular ROV



10.4" Monitor

“We have just located the major part of a Spanish galleon cargo in 180 ft of water, we would not have located it without the SeaOtter.”... Steve Morgan, Philippines

“We are really impressed with the SeaOtter's performance.”
...Joe Plano, NY

for search and inspection operations”

... towed, ... dropped ...

Go to web site for comprehensive data sheets on all products.

TOV-1 Towed Video

The TOV-1 Towed Video provides a cost effective way to perform large scale underwater searches. Rather than deploy divers to swim extensive grid patterns looking for lost objects or conducting benthic surveys, deploy the TOV and view the underwater environment from the comfort and safety of a boat. Use the towed video to inspect an area or verify a target before entering the water.

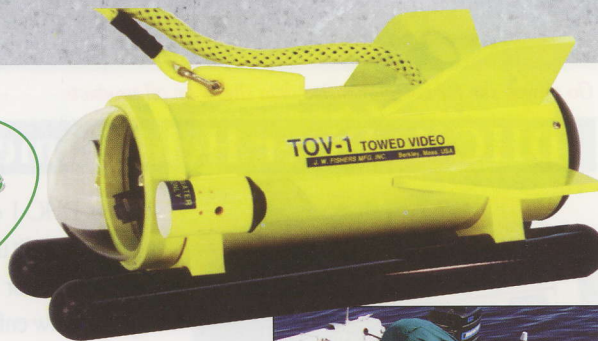
“The TOV-1 has become indispensable in conducting large scale u/w searches.”
...Don McCown, Anderson, SC. Search and Rescue

The TOV-1 has a high resolution black and white camera and two powerful 100 watt quartz halogen lights to provide quality underwater images even in low visibility or low light conditions. This versatile system can also be deployed as a horizontal or vertical drop camera. The video picture can be viewed topside on a monitor, TV, or computer (with the use of a video capture card), and easily recorded to tape or disk.

This high performance underwater camera is in use by dive rescue groups and law enforcement agencies worldwide as well as NOAA, and various state and federal fisheries services.

Options: color or PAL format cameras, two additional lights, cable lengths up to 1,000 feet, altimeter, VRM-1 digital video recorder/monitor, depressor wing and inverter for 12 volt operation.

Towed Commercial Camera for Large Search Areas



“These cameras have helped us locate numerous vehicles and one sunken boat.”
...Vincent Decker, Wayne County Rescue

DV-1 Dropped Video

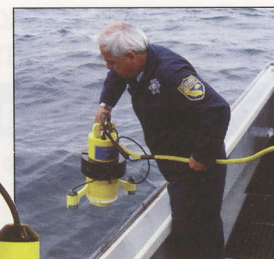
The DV-1 drop video system is the perfect tool to view an underwater site or search a small area. Difficult or dangerous dives can be avoided by deploying the drop camera to search for lost objects, sunken vessels, submerged vehicles, or assist in any of the underwater operations normally performed by public safety dive groups. The DV-1 is especially useful for deep water search operations that may involve diving beyond no decompression limits, saving time and eliminating risk to divers. The camera housing has a handle which makes it easy to be carried by a diver for filming underwater sites or evidence. The video picture can be viewed topside on a monitor, TV, or computer (with the use of a video capture card), and easily recorded to tape or disk.

The DV-1 comes with 150 feet of cable, a high resolution black and white camera, two powerful tungsten halogen lights, and built in leak detection circuitry. The system is powered by 120 volts ac which allows unlimited operating time with a small generator.

“DV-1 camera has proved it’s performance over and over and exceeded our expectations in search and recovery operations.”
...Ivan Mason, Tribal Council, Manitoba, Canada

Options: cable up to 1,000 feet, color cameras (PAL or NTSC), altimeter, VRM-1 digital video recorder/monitor, and inverter for 12 volt operation.

Commercial Grade Dropped Camera



Deploying the DV-1

“This DV-1 camera system really works well for our squid research and for a variety of other projects.”
...Ray Michalski, California Dept of Fish and Game

VRM-1 Video Recorder and Monitor

The VRM-1 is a video monitor with a built-in Digital Video Recorder (DVR). Any of Fishers video cameras can be connected to the to the VRM-1, and with a special interface cable other manufacturers video cameras can be displayed and recorded. A microphone is provided allowing audio to be recorded with the video. The control panel of the VRM-1 contains switches and controls to operate the camera, lights, and audio.

The video and audio is recorded on a standard 16GB SD card (included) for up to 12 hours. Recorded video can be played back on a computer and a DVD created.

Options: interface cable for other video cameras, GPS interface, and text overlay.



VRM-1 Video Recorder and Monitor

..... and diver-held camera systems.



Go to web site for comprehensive data sheets on all products.

DHC-1 Diver Held Camera



Fishers DHC-1 diver-held camera is a ruggedly built underwater video system designed for use by commercial diving companies, law enforcement agencies, and military units. It is the perfect tool to perform a bridge inspection, examine the hull of a ship, view the face of a dam, capture an underwater crime scene, or film evidence. The DHC sends live video from the underwater camera to the surface for viewing and recording. Topside personnel can make on the spot decisions about work that needs to be done to an underwater structure or how to proceed with a recovery operation.

Commercial Diver Held Inspection Camera



"Gives us great underwater pictures of the dam face which helps us make decisions on what repairs may be needed." ...Kevin Reed, Buchanan Dam, TX.

The DHC is constructed of corrosion proof PVC and is depth rated to 500 feet. Two powerful quartz halogen 100 watt bulbs provide lighting for the high resolution black and white camera. A switch on the housing lets the diver control the camera and the amount of light on the subject. Video feed from the camera can be viewed topside on a video monitor, TV, or computer equipped with a video capture card. Record the video to tape or DVD. The complete system is surface powered by 120 vac to provide unlimited operating time. The DHC-1 comes with B&W camera, lights, and 150 feet of cable.

"We can video tape an inspection or welding job so our customer can see exactly what our divers see. The camera is working great for us." ...Matt Hurst, NV

Options: color cameras (NTSC or PAL), VRM-1 digital video recorder/monitor, cable to 1,000 feet, 12 volt inverter, and a 220 volt transformer.

MC-1 Mini Camera



The MC-1 mini camera is so compact and light weight it can easily be mounted on a diver's helmet or lowered into a pipe for an internal inspection.

Attaching the camera to the helmet allows the surface support team to see what the diver sees while performing an inspection or repair operation.

Connect a recorder to the topside monitor and a permanent record of the job can be made for the client.

Attach the MC-1 to a pole handle and surface personnel can use it to inspect seawalls, bulkheads, ship hulls, and any other job where the camera can be maneuvered from above, eliminating the need to deploy a diver.

The MC-1 comes with a corrosion proof PVC housing depth rated to 500 feet, a black & white camera, 150 feet of cable and is surface powered by 12 vdc.

Two light systems are available; a high intensity internal LED ring light or powerful external 100 watt halogen lights (or both).

Very Versatile Miniature Camera



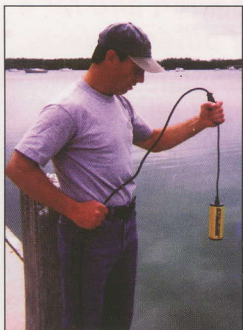
MC-1 helmet mounted

"We used the mini camera to view several hundred feet inside of a pipe. The MC-1 worked beautifully" ...Roger Bankston (SeaWorld), FL

Two external 100 watt lights with handle

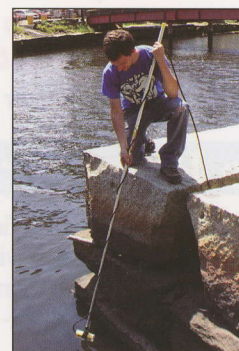


Two different lighting options



"The MC-1 we purchased last year is doing such a great job for us, we decided to get another one" ...Ross Powell, Hull Diving; Manama, Bahrain

Options: cable up to 1,000 feet, internal light ring, external light(s) with handle, pole mount kit, color camera (PAL or NTSC), VRM-1 digital video recorder/monitor, and power by 120 or 220 volts ac.



Pole deployment

Internal LED ring



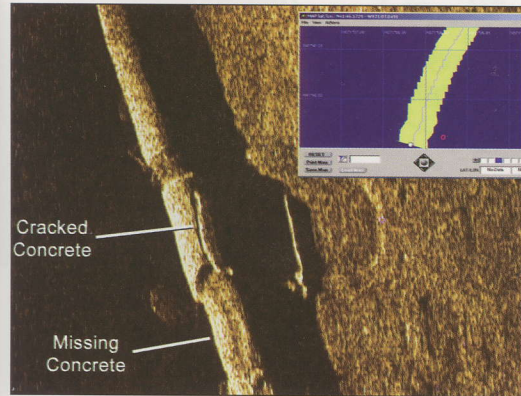
“Start your search with side scan sonar

Jack Fisher

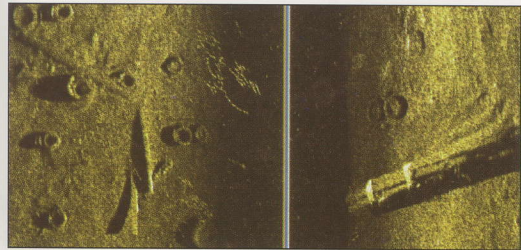


**Side Scan
is the Best Search
Tool if the Target
is not Buried**

Go to web site for comprehensive data sheets on all products.



Cracks in concrete covered pipeline with map showing boat's path and area covered



Mud covered tires and banded pilings

Options: map coverage software, depressor wing, splash-proof computer, cable connectors, and cable lengths up to 1,000 feet.

Choose from four different systems: 100K, 600K, 1200K, or Dual Frequency

SSS-100K Side Scan Sonar

The 100K low frequency system is best for wreck hunting and general search applications such as locating pipelines, logs, rock outcrops, large propellers, and sunken vessels. The SSS-100K has excellent long range capabilities of up to 1,800' per side (3,600' swath) for locating large ships.

“...gave me great images of the bottom, you could easily see how each target was laying” ...Mike Collins, Destin, FL

SSS-600K Side Scan Sonar

The 600K high frequency system has high resolution over ranges up to 200' (400' swath). Ideal for law enforcement and dive rescue operations because it shows even soft targets such as drowning victims and clothing. This system is also popular with treasure hunters and archaeologists searching for ancient shipwrecks because it can “see” soft targets like decaying wood.

“The SSS-600K located the body within a few hours, this equipment will save us thousands of man hours.” ...Capt Ed Cate, Knoxville County Rescue

SSS-1200K Side Scan Sonar

The 1200K high frequency system has very high resolution over ranges up to 100' (200' swath). Ideal when maximum resolution (detail) of the target is needed. This system can “see” anything that the 100K and 600K can see in the 100' and lower range settings, but can produce the image in more detail.

Dual Frequency Side Scan Sonar

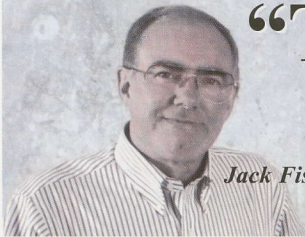
A dual frequency sidescan offers the best features of both low and high frequency systems in one towfish. The operator can switch between high and low frequency at any time. Typically, searches are done with the low frequencies for the longer range. When a target is identified, a close pass is made with the high frequency to get a higher resolution image. Any combination of any two different frequencies are available:

“We were able to find the 16 foot ski boat quickly and easily” ...Tom Tessier, CA

- SSS-100K/600K
- SSS-100K/1200K
- SSS-600K/1200K

For general searching, the SSS-100K/600K is recommended. For search and rescue or scientific work the SSS-600K/1200K.

Single frequency side scans can be upgraded to the dual frequency system at any time.



Jack Fisher

“Tracking cables and pipes just got *Faster and Easier* with Fishers CT-1 and PT-1”

Go to web site for comprehensive data sheets on all products.

CT-1 Cable Tracker

Fishers CT-1 cable tracking system was specially designed to locate deeply buried power and communication cables. The CT-1 can locate cables on land and underwater. In addition to locating and tracking cables, the CT-1 can also find breaks or faults in the line.

“The CT-1 works extremely well, it has saved us a significant amount of time and money.” ...Paw Cortes, Consulting Team Offshore, Denmark



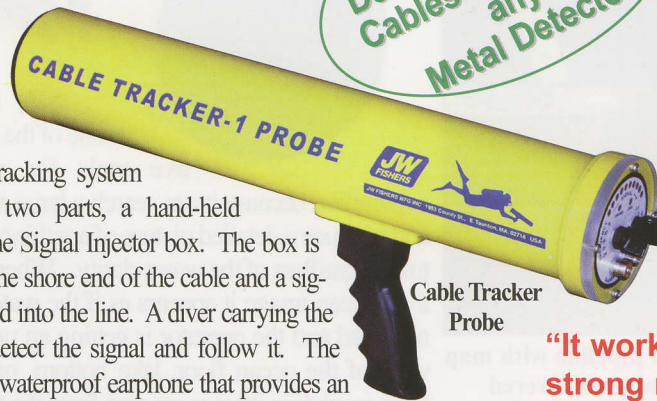
Signal Injector

“We have contracts with power companies to locate their submarine cables, the CT-1 has made the job so much easier.” ...Bill Castle, Hydro Marine, NJ

The cable tracking system consists of two parts, a hand-held Probe and the Signal Injector box. The box is attached to the shore end of the cable and a signal is injected into the line. A diver carrying the Probe can detect the signal and follow it. The Probe has a waterproof earphone that provides an audio alarm and an LED light bar for visual readout. As the diver gets closer to the cable, the audio signal gets louder, and more LEDs illuminate in the light bar.

When tracking live power cables it is not necessary to inject a signal onto the line. The Probe will detect the 50 Hz (Europe) or 60 Hz (USA) signal. If the power cable is dead or the cable is fiber optic, then a signal must be induced. In most cases, the Probe will begin to detect the cable from a significant distance. The detection range is often so great that when working in shallow water it is not necessary to deploy a diver to locate and track it. Working from a boat with the nose of the probe pointed down over the side of the boat, the cable can be tracked from the surface. When tracking cables on the bottom, a triangulation technique allows the diver to determine the approximate depth of burial of the cable.

The Probe has six internal AA rechargeable batteries that power it for 2 to 3 hours. The Signal Injector box is powered by 120 volts ac. The box can be powered from 12 volts dc with the use of an inverter and from 220 volts ac with the use of a transformer. **Options:** carrying case for probe and signal injector, and 220 vac transformer.



Cable Tracker Probe

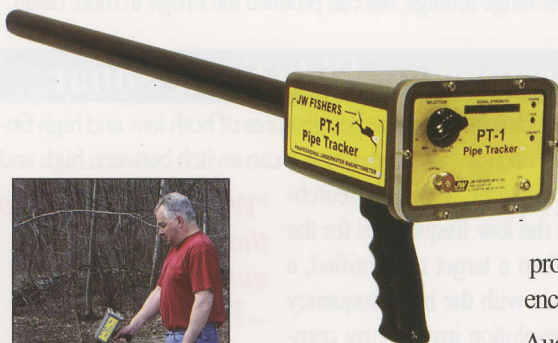
Detects and Tracks Cables Deeper than any Metal Detector



Tracking cable in shallow water

“It worked great giving strong readings while we tracked the cable for over 2 Km. It really exceeded our expectations.” ...Nigel Fluit, Hong Kong

PT-1 Pipe Tracker



Pinpoints and Tracks Pipelines up to 15 ft. Deep



Tracking an armored cable on land

The PT-1 is a pinpointing magnetometer designed to locate and track deeply buried pipelines and steel armored cables. It works equally well on land and underwater.

PT-1's advantage over metal detectors is its greater detection range. Its advantage over other magnetometers is its directional detection capability which means the PT-1 can quickly guide the operator directly to the target. Another advantage of the PT-1 is that it can be used in areas with iron or steel structures nearby, such as bridges and ships, and still pinpoint the location of targets in close proximity to them. It can even detect steel objects encased in concrete, like rebar and pipelines.

Audio and visual readouts alert the diver when a target is detected. The magnetometer has a rechargeable battery that will power it for more than 100 continuous hours of operation. The PT-1 comes complete with underwater earphone, 12 volt dc and 120 volt ac chargers.

Options: dual underwater earphones, carry case, and 220 vac. charger

“Simplifies tracking of even deeply buried pipelines”



Ideal for tracking pipelines underwater

..... by *Removing the Water*

.....and scanning sonar”



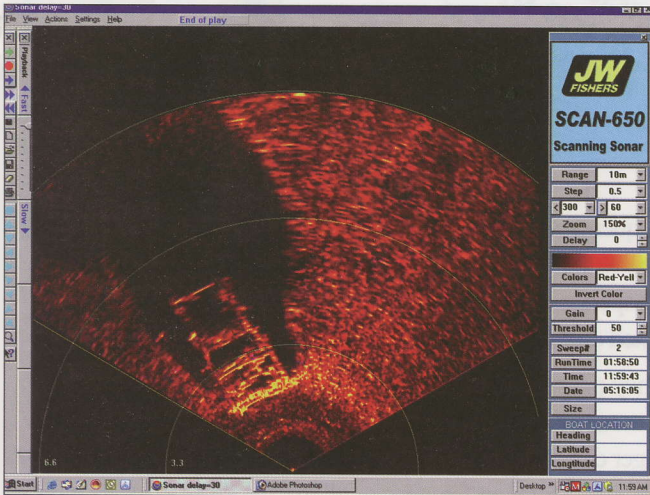
Go to web site for comprehensive data sheets on all products.

SCAN-650A & B Scanning Sonar

Low Cost Sonar Tool for Locating Targets on the Bottom

SCAN-650A for larger ROVs

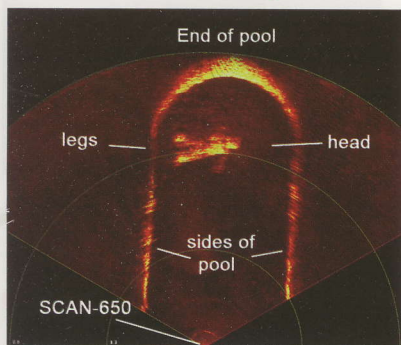
SCAN-650B for smaller ROVs



Car on river bottom (note large black shadow)

Scanning sonar is an excellent tool for a variety of search operations because it produces a "picture" of the underwater environment regardless of water clarity. The sonar image is not as detailed as the side scan, but it's a great low cost alternative to a towed system. Fishers SCAN-650 is a high performance scanning sonar that can be deployed from a boat by mounting the transducer on pole handle for shallow water operations or attaching the sonar head to a tripod and lowering it to the bottom for sharper images or deeper water ops. This sonar can also be attached to almost any ROV to locate targets beyond the visual range of the camera, or for use as an obstacle avoidance system in low visibility environments.

"...this sonar is working great, and doing a good job for us" ...Steve Phillips, Three Rivers Diving, MO



Body on bottom of 10m pool

Scanned files are stored on the computer's hard drive along with the boat's GPS position, time, date, and other pertinent data. Files can be played back at any time, and screen shots captured for printing or email. The software allows post-processing of data for editing and merging files. A sizing tool is used to determine the dimensions of an object.

The SCAN-650 package includes the sonar head and electronics in an underwater housing, 150 feet of cable, topside sonar processor box, software, and USB interface cable to your computer. **Options:** narrow beam, cable lengths up to 2,000 ft and a carry case.



Sonar Processor box included

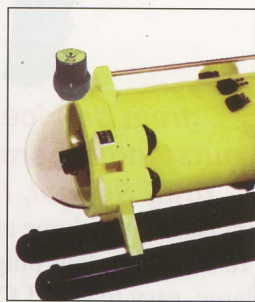


Scan-650NB (Narrow Beam for higher resolution)

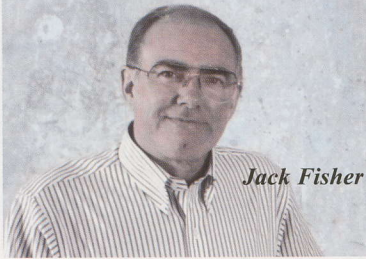
Two different mounting configurations shown below



SCAN-650A (mounted on pole)



SCAN-650B (mounted on ROV)



Jack Fisher

“Mark a target’s position so it can be *Quickly* relocated in the future”

Go to web site for comprehensive data sheets on all products.

SFP1 and MFP1 Sonar Pingers

Fishers acoustic pingers make it quick and easy to relocate an underwater site or piece of equipment. The pinger is attached to an underwater location and continuously transmits a sonar signal. A diver

“...this equipment is great, our client is very happy with the result” ...Pat Williams, Weatherford Pipeline Services, UAE

equipped with a pinger receiver (see below) can pick-up the acoustic signal and follow it directly to the pinger.

Pingers are available with different transmit frequencies so many units can be deployed in the same general area without causing interference from each other. The pinger can operate for a few days to several months, depending on the selected output power.

Two different pingers are available; the SFP-1 single frequency pinger and the MFP-1 multifrequency pinger. The single frequency pinger transmits only one frequency, which is set at the factory. The multifrequency pinger can transmit 60 different frequencies. The operator selects which frequency will be used before deploying the acoustic device. Different frequencies allows the diver to locate individual pingers in an area where several units are deployed.

Options include two larger housings for more batteries to increase the operating time, and a carry case.

Very Powerful Commercial Grade System, in use by the Military



“These pingers are very reliable and easy to operate” ...Michel Arseneau, Dept of Environment



ROV deploying Pinger

PR-1 Pinger Receiver

The PR-1 is a highly advanced pinger receiver capable of locating any pinger transmitting a frequency between 3 KHz and 97 KHz.

It can be carried by a diver or deployed from a boat. Operating the receiver is easy; select the frequency to be located and scan the area with a 360 degree sweep. Audio and visual readouts alert the operator to the presence of a signal. Once a pinger is detected the diver swims in that direction guided by a compass mounted on top of the PR-1. As the receiver gets closer to the acoustic source, the audio tone increases in volume and more LEDs are illuminated on the light bar.

“...great service and outstanding product” ...Anuj Sehgal, IURS

To locate another pinger, simply change the frequency using the control on the front panel. The frequency setting is displayed on large, easy to read LCD as a number between 3 and 97. The receiver is powered by an internal rechargeable battery pack that provides 30 continuous hours of operation before needing another charge. Both 120 volt ac and 12 volt dc battery chargers are included. An optional 220 transformer is available to charge from 220 volts. Other options include a boat deployment kit, dual underwater earphones, and a carry case.

Very Sensitive Commercial Grade System, in use by the Military



Boat deployment kit



Diver deploying with PR-1

“The PR-1 has proved to be a very effective tool to relocate u/w sites” ...S. Morelli, Society of Industrial Explosives

“Fishers hand held metal detectors are the *Most Powerful* you can buy”

Go to web site for comprehensive data sheets on all products.

PULSE 8X Hand Held Metal Detector

With a 200 foot depth rated housing and 6 foot maximum detection range, the Pulse 8X is Fishers top of the line model. This commercial-grade metal detector is in use by professional treasure hunters, commercial diving companies, law enforcement agencies and military units worldwide.

The 8X comes with a complete accessory package that includes everything needed for land and water hunting. Detects all metals from coins and jewelry, to anchors and cannons; on land and underwater. Powered by an internal 9 volt rechargeable battery, the detector will easily run all day on a full charge. Unlike some other detectors, this machine will not give false readings in mineralized environments, such as salt water, around coral reefs, near high iron rocks, or on black sand beaches.

Options for the Pulse 8X include a connector for changing coils and an extensive line of interchangeable search heads. Two of these coils can be deployed from a boat which means, the detector's electronics unit stays topside with the operator, and a

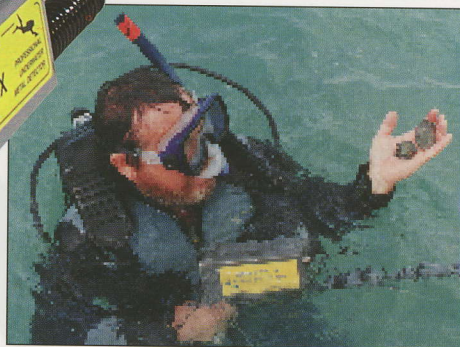
“..the P8X has a reputation for finding treasure; but on this day it found more than that, a small gold ring that cost this young couple most of their savings” ...Larry Hill, ID

large detecting head with a long cable is lowered to the bottom. Search for pipelines, outboard motors, anchors and sunken treasure, without even getting wet!

PULSE 6X Hand Held Metal Detector

The Pulse 6X has the same heavy duty construction as the 8X, and many of the same features, but a shorter detection range. This detector's single knob control makes it extremely easy to operate. Ideal for novice hunters and new divers - just turn on and go! One key feature of the 6X is that it can be upgraded to an 8X at any time. All of the options available with the 8X can also be added to the 6X.

**Pulse 8X
The Detector
Most Widely Used by
Professionals**



Spanish pieces-of-eight



Pulse 8X with land handle

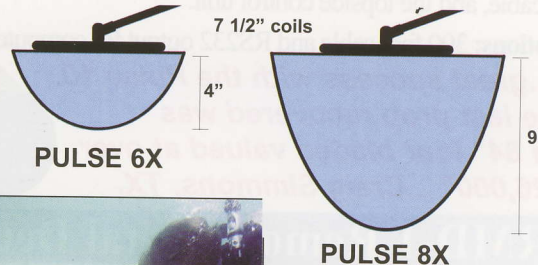
“The Pulse 8X found many artifacts and about 15,000 gold and silver coins of various dates to 1680, what fine equipment” ...Carlos Savedra, Ecuador

“If we are looking for a weapon, we know the P8X will find it” ...Mike Waring, State Police Dive Team, NM



Pulse 8X includes this accessory package

DETECTION AREA FOR A PENNY



**Pulse 6X
Our Most
Economical
Detector**



“Pulse 6X works great for evidence recovery, we are very impressed with it” ...Scott Kuyendall, VA Police Dept



Jack Fisher

“Fishers boat towed metal detectors are *Powerful* commercial grade detectors”

Go to web site for comprehensive data sheets on all products.

PULSE 12 Boat Towed Metal Detector

The Pulse 12 is Fishers most powerful detector for ferrous and non-ferrous metal targets. With its 24 foot wide and 16 foot deep detection envelope this detector will locate a variety of targets including aluminum boats, brass propellers, out-board motors, steel anchors, bronze cannons, and gold bars. A key feature of this detector is the control unit can accept inputs from 3 search coils. Using 3 coils instead of 1 lets

“..total haul was \$700,000 in coins, our tool of choice was the Pulse 12” ...Brian Dillon, England

the search team cover 3 times the area with the same amount of time, fuel, and manpower.

The Pulse 12 comes with one towfish and coil, 150 feet of cable, and the topside readout unit with controls for 3 towfish. Meter and audio outputs alert the operator to the presence of a metal target.

Options: two additional fish, RS232 output for computer, 300 ft cable



Top of the Line All Metals Detector

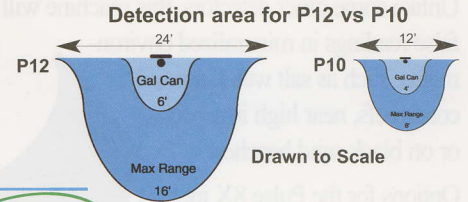


Deploying the Pulse 12

“ Pulse 12 is being used to locate unexploded ordnance, pipelines, and other targets; it's doing a great job for us.” ...Ken Hayes, Aqua Survey, NJ



Topside box can control up to three fish/coils



PULSE 10 Boat Towed Metal Detector

The Pulse 10 is Fishers most economical towed metal detector. Detects all metals; ferrous and nonferrous. Low cost and wide detection area make this detector a good choice for both commercial operations and recreational use. Audio alarm and visual readout alert the operator when the detector passes over a metal target.

The Pulse 10 comes with towfish, 18 inch coil with 150 feet of cable, and the topside control unit.

Options: 300 foot cable and RS232 output for computer.

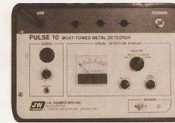
“...great success with the Pulse 10, the last prop recovered was an 84” four bladed valued at over \$26,000” ...Craig Simmons, TX.



Most Economical Boat Towed



Deploying the Pulse 10



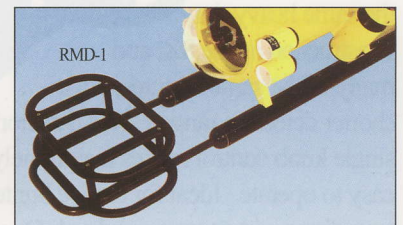
Control Box

“I've found all kinds of stuff including anchors, out-board motors, propellers, and even an old Woodie boat with a inboard engine” ...Mike Carpenter, IN.

RMD-1 Remote Metal Detector

The RMD-1 is a high performance pulse induction metal detector which can be attached to almost any ROV, sled, or towed underwater system. Pulse induction technology allows the RMD-1 to detect both ferrous and nonferrous objects, at ranges up to 5 feet, on or under the ocean floor while ignoring mineralization in the saltwater and seabed. The ROV metal detector has been used to locate and track underwater pipelines, find missing tools and dredge parts, locate weapons and unexploded ordnance, and to search for lost treasure. A surface control box displays the readout with both a meter and audio alarm. **Options:** RS232 output for computer.

Very Versatile Detector



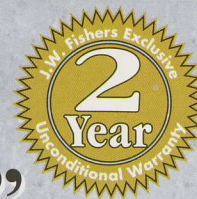
RMD-1 mounted on ROV



Control Box

“attached to Odyssey's deep water ROV hundreds of millions of dollars of gold and silver coins located.”

"Magnetometers are the *Most Sensitive* ferrous-metals detectors available"



Go to web site for comprehensive data sheets on all products.

PROTON 4 Boat Towed Magnetometer

The Proton 4 is the ultimate detector for iron and steel targets. With a max range of 1,500+ feet, it is one of the best tools to find big metal targets like sunken ships when the search area is large. The mag is also a good choice to locate a variety of smaller targets such as pipelines, anchors, chains, cannons, dredge heads, etc. It is especially useful when objects are buried in the bottom and can't be found with sonar or video search systems.

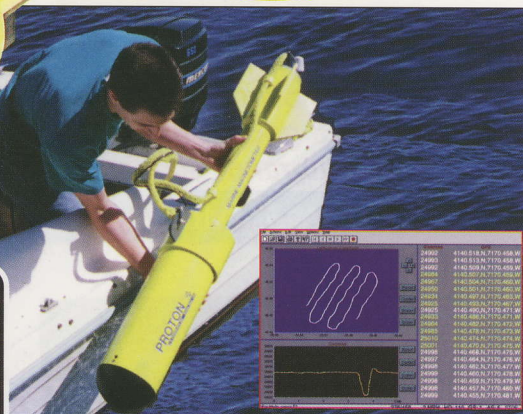
This high performance marine magnetometer is ruggedly built and easy to operate. The topside console has both audio and visual alarms for target detection. Connect a GPS and position coordinates can be captured with the mag readouts on a built in printer or laptop computer. Optional Tracker software shows the path of the boat as it moves over the search area and uses a graph to display the mag readouts, allowing the operator to quickly see where and when a target is detected.



Most Sensitive Detector for Iron/Steel Targets



Control Box



Deploying the Proton 4 (optional Tracker software)

"We have found so many things with it from 1 inch iron rods to shipwrecks. It really works great." ...Bob Norwood, Southern Salvors, AL

"We use the mag weekly. It's great for those large tasks like recovering ship anchors, chains, etc, and cannon by the dozen" ...Chris Juredin, Tortola, BVI

Diver Mag 1 Diver Held Magnetometer

The Diver Mag 1 has the same high performance as the Proton 4, but it's built to be easily carried on land or moved through the water by a diver. This hand-held mag has user friendly controls that make it simple for a diver to operate. A large LCD display and audio alarm heard through an underwater earphone alert the diver to the presence of an iron or steel target.

"...the anchor was quickly located buried under 4m of mud" ...M. Cyr, Quebec, Canada

The Diver Mag is ideal for many of the operations performed by today's commercial diving companies including tracking pipelines, finding anchors and chains, and locating submerged objects. Law enforcement divers also find it an excellent tool for locating weapons and explosive devices. In shallow water operations the Diver Mag is so sensitive it can be operated from inside the boat to locate submerged vehicles and sunken vessels.

"We call it the magic wand, it leads you directly to the wreck" ...Bob Duarte, Philippines

"Very pleased with the mag, it located the pipeline buried 12 feet down" ...B. Fennessey, Global Divers, West Africa



Most Sensitive Diver-Held Detector for Iron/Steel Targets



Mag in land operation



“Underwater search accessories that reduce your search time”



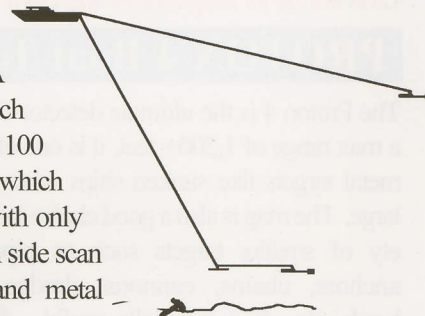
Go to web site for comprehensive data sheets on all products.

DDW-1 Depressor Wing

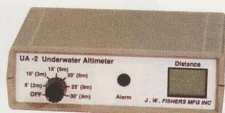


“Even at depths over 200m, the DDW does a good job for us”...Phillip Gillibrand, Scotland

The DDW-1 deep dive wing is designed to tow any underwater instrument package deeper using less cable. A typical ratio of cable length to tow depth is 4 to 1 which means 400 feet of cable is needed to tow at a depth of 100 feet. By using the wing the ratio is reduced to 2 to 1 which means the equipment can be towed 100 feet deep with only 200 feet of cable. The DDW-1 is routinely used with side scan sonars, magnetometers, towed video equipment and metal detectors.



UA-2 and UA-3 Altimeters



The underwater altimeter shows the distance between towed equipment and the ocean floor. With the altimeter attached, instrumentation can be towed at a known distance from the bottom for greater accuracy and safety. A large LCD display shows the distance in feet or meters/centimeters. The UA-2 measures from 2 ft to 99 ft, the UA-3 from 2 inches to 99 ft. An adjustable audio alarm alerts the operator when a selected distance from the seabed is reached, allowing for corrective action. The altimeter comes with transducer, 150 feet of cable, and topside control unit. **Options:** up to 1,000 feet of cable.

“Altimeter works great on our equipment”
...Anton Smirnov, EIC Labs

The underwater altimeter shows the distance between towed equipment and the ocean floor. With the altimeter attached, instrumentation can be

On-Screen-Display



Data is superimposed on video screen Can be used with any video camera. Displays the Time, Date, and Boat's GPS position directly on the screen and is recorded along with the video on a DVR/DVD. For ROVs or similar equipment, an optional remote sensor package is available. Water temperature, depth, and compass heading are displayed and recorded. Ideal for ROV systems.

DHL-1 and SL-1 Dive Lights



DHL-1 Diver Held Light

Fishers underwater light systems are ideal for any of the numerous underwater inspection projects encountered by today's commercial divers. The DHL-1 Diver Held Light and SL-1 Single Light supply continuous lighting for extended underwater operations such as hull or bridge inspection in depths up to 1,000 feet. The very powerful light beam is provided by two 100 or 250 watt tungsten halogen lamps in the DHL-1 or a single 100 or 250 watt lamp in the SL-1. SL-1 lights can be ganged together for those applications where multiple lights are required. Both light systems are surface powered by 120 vac and include ground fault protection circuitry.



SL-1 Single Light

Hello, I'm Chris Combs, Sales Manager at JW Fishers. If you have any questions on our products, need a Technical Data Sheet, or would like to request a formal quote with shipping cost, give me a call or send me an email.



JW FISHERS MFG INC
1953 County Street
E. Taunton, MA 02718 USA

(800) 822-4744, (508) 822-7330; FAX: (508) 880-8949; Email: jwfishers@aol.com; Web: www.jwfishers.com